

		Primary	Middle
Zirna In awmzat		1783	1253
Zirlai awmzat	Hmeichhia	72907	31024
	Mipa	78992	33863
Zirtirtu awmzat		8716	7754
Teacher-pupil ratio		1:17	1:08

### Anganwadi Centres

No. of Anganwadi Centres : 1933

No of Children Enrolled :

- a) 6 months – 3 years : 74753
- b) 3 – 6 years : 57786

**Naupang Chanhai leh Rualbanlote  
Dinhmun**

Fahrah Enkawlna (Orphanage/Home)  
awmzat : 27

Naupang awm  
zat : 1126

Nu leh Pa nei  
lo : 82

Nu / Pa nei : 343

Nu leh Pa la  
nei : 380

Pianphunga  
Rualbanlo : 22

Rilru lama  
Rualbanlo : 29

Heng naupang zingah hian 276-te  
chu fa atana lak theih an ni.

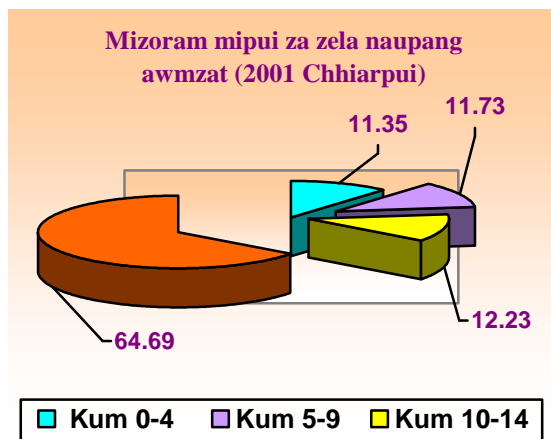
**4<sup>th</sup> STATISTICS DAY  
29<sup>th</sup> June, 2010  
Theme : Child Statistics**

**Government of Mizoram  
Directorate of Economics and Statistics  
Aizawl, Mizoram**

### Kum 2001 Chhiarpui-a Naupangte Dinmun

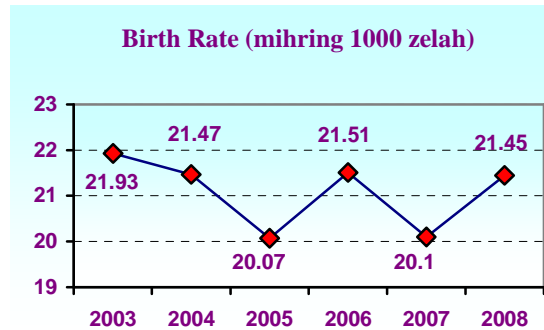
Kum	Hmeichhia	Mipa	Total
0 – 4	49715	51097	100812
5 – 9	51031	53201	104232
10 – 14	53450	55242	108692
<b>Total</b>	<b>154196</b>	<b>159540</b>	<b>313736</b>
<b>Mizoram</b>	<b>429464</b>	<b>459109</b>	<b>888573</b>

Kum 2001 Chhiarpui-ah Mizoramah mihring 888573 an awm a, chung zinga 313736-te chu naupang kum 0 atanga kum 14 thleng an ni a. Chu chu mihring 100-a thena 35.51 an ni. Hmeichhia 100 zelah naupang 35.90 an awm lain mipa 100 zelah naupang 34.75 an awm a ni.

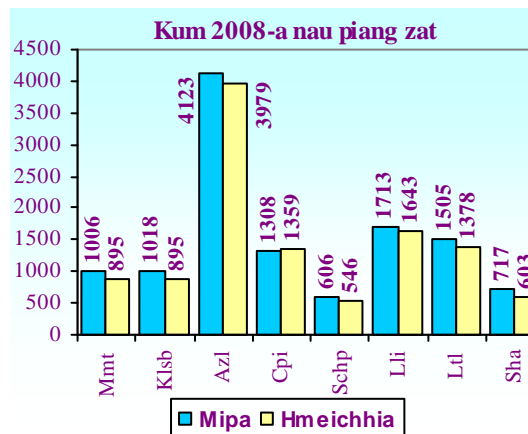


### Kum 2008-a Naupang Piang leh Thi Zat

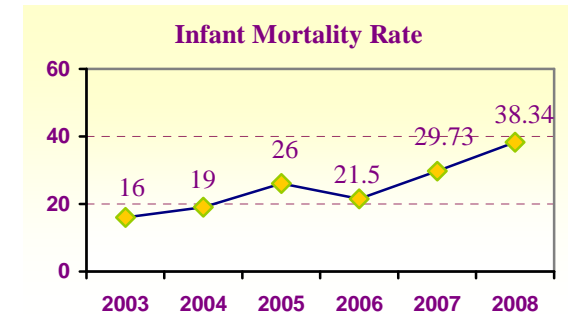
Kum 2008-a nau piang zat : 23294  
 Kum 2008-a naupang (kum 0-14) thi zat : 1479



Birth Rate chu mihring sangkhat (1000) zela nau piang zat tihna a ni. Kum 2008-ah mihring 1000 zelah nau piang 21.45 an awm anga chhut a ni. Kum 2008-a District tina nau piang zat chu a hnuai mi ang hi a ni:



Infant Mortality Rate kan tih hian nau piang 1000 zela naute thi zat sawina ani. Kum 2008 khna nau piang 1000 zelah naute 38.34 an thi a, a hma kum (2007) aiin 9.61-in naute thi zat hi an tam a ni.



Kum 2008-a District tina nau piang 1000 zela naute thi zat chu a hnuai mi ang hi a ni:

### Zirna lama naupangte Dinmun